



**Republika e Kosovës**  
**Republika Kosova-Republic of Kosovo**  
*Qeveria-Vlada-Government*

---

**PROJEKTLIGJ PËR RATIFIKIMIN E MARRËVESHJES PËR KUFIRIN SHTETËROR NË MES TË  
REPUBLIKËS SË KOSOVËS DHE MALIT TË ZI**

**DRAFT LAW ON RATIFICATION OF THE AGREEMENT ON THE STATE BORDER BETWEEN THE  
REPUBLIC OF KOSOVO AND MONTENEGRO**

**NACRT ZAKON O RATIFIKACIJI SPORAZUMA O DRŽAVNOJ GRANICI IZMEĐU REPUBLIKE KOSOVA  
I CRNE GORE**

<p>Kuvendi i Republikës së Kosovës,</p> <p>Në bazë të neneve 18 dhe 65 (1) të Kushtetutës së Republikës së Kosovës,</p> <p>Miraton:</p> <p style="text-align: center;"><b>LIGJ PËR RATIFIKIMIN E MARRËVESHJES PËR KUFIRIN SHTETËROR NË MES TË REPUBLIKËS SË KOSOVËS DHE MALIT TË ZI</b></p> <p style="text-align: center;"><b>Neni 1</b></p> <p>Ratifikohet Marrëveshja për Kufirin Shtetëror në mes të Republikës së Kosovës dhe Malit të Zi, e nënshkruar në Vjenë me datë 26 gusht 2015.</p> <p style="text-align: center;"><b>Neni 2</b></p> <p>Dispozitat e Marrëveshjes për Kufirin Shtetëror në mes të Republikës së Kosovës dhe Malit të Zi, e nënshkruar në Vjenë me datë 26 gusht 2015, nëse ka fakte të reja ligjore, mund të ndryshohen dhe plotësohen me pëlqimin e palëve. Dispozitat e kësaj marrëveshje mund të ndryshohen sipas procedurës së njëjtë të paraparë për miratim. Me pajtimin e palëve, për ndryshimin e dispozitave të marrëveshjes mund të kërkohet edhe Arbitrazh ndërkombëtar.</p>	<p>The Assembly of the Republic of Kosovo,</p> <p>Pursuant to Article 18 and Article 65 (1) of the Constitution of the Republic of Kosovo,</p> <p>Approves:</p> <p style="text-align: center;"><b>THE LAW ON RATIFICATION OF THE AGREEMENT ON THE STATE BORDER BETWEEN THE REPUBLIC OF KOSOVO AND MONTENEGRO</b></p> <p style="text-align: center;"><b>Article 1</b></p> <p>The Agreement on the state border between the Republic of Kosovo and Montenegro, signed in Vienna, on 26 August 2015, is ratified.</p> <p style="text-align: center;"><b>Article 2</b></p> <p>Provisions of the Agreement on the State Border between the Republic of Kosovo and Montenegro, signed in Vienna, on 26 August 2015, if new legal arguments are provided, can be changed and amended with the approval of the parties. Provisions of this Agreement can be changed following the same procedures that were envisaged for its adoption. With the consent of parties, international arbitration can be sought for changing provisions of the agreement.</p>	<p>Skupština Republike Kosova,</p> <p>Na osnovu člana 18 i 56 (1) Ustava Republike Kosova,</p> <p>Usvaja:</p> <p style="text-align: center;"><b>ZAKON O RATIFIKACIJI SPORAZUMA O DRŽAVNOJ GRANICI IZMEĐU REPUBLIKE KOSOVA I CRNE GORE</b></p> <p style="text-align: center;"><b>Član 1</b></p> <p>Ratifikuje se Sporazum o državnoj granici između Republike Kosova i Crne Gore, potpisan u Beču 26 avgusta 2015 godine.</p> <p style="text-align: center;"><b>Član 2</b></p> <p>Odredbe Sporazuma o državnoj granici između Republike Kosova i Crne Gore, potpisan u Beču dana 26 avgusta 2015 godine, ako postoje nove zakonske činjenice, može se izmeniti i dopuniti, uz saglasnost strana. Odredbe ovog Sporazuma mogu se izmeniti prema istoj proceduri koja je predviđena za usvajanje. Uz saglasnost strana, za izmenu odredaba Sporazuma može se zahtevati i međunarodna arbitraža.</p>
---	--	--

<p style="text-align: center;"><b>Neni 3</b></p> <p>1. Pjesë përbërëse e këtij ligji janë:  1.1. Marrëveshja për Kufirin Shtetëror në mes të Republikës së Kosovës dhe Malit të Zi, e nënshkruar në Vjenë me datë 26 gusht 2015 dhe  1.2. Dokumentacioni zyrtar i Komisionit Shtetëror për shënimin e Kufirit Shtetëror në mes të Republikës së Kosovës dhe Malit të Zi.</p>	<p style="text-align: center;"><b>Article 3</b></p> <p>1. Integral parts of this law are:  1.1. The Agreement on the State Border between the Republic of Kosovo and Montenegro, signed in Vienna, on 26 August 2015, and  1.2. Official records of the State Commission for demarcation of the State Border between the Republic of Kosovo and Montenegro.</p>	<p style="text-align: center;"><b>Član 3</b></p> <p>1. Sastavni deo ovog Zakona su:  1.1. Sporazm o Državnoj granici između Republike Kosova i Crne Gore, potpisan u Beču 26 avgusta 2015 godine, i  1.2. Zvanična dokumentacija Državne komisije za obeležavanje državne granice između Republike Kosova i Crne Gore.</p>
<p style="text-align: center;"><b>Neni 4</b> <b>Hyrja në fuqi</b></p> <p>Ky ligj hyn në fuqi pesëmbëdhjetë (15) ditë pas publikimit në Gazetën Zyrtare të Republikës së Kosovës.</p> <p style="text-align: right;">Kadri Veseli</p> <hr style="width: 20%; margin-left: auto; margin-right: auto;"/> <p style="text-align: center;">Kryetar i Kuvendit të Republikës së Kosovës</p>	<p style="text-align: center;"><b>Article 4</b> <b>Entry into force</b></p> <p>This Law shall enter into force fifteen (15) days after publication in the Official Gazette of the Republic of Kosovo.</p> <p style="text-align: right;">Kadri Veseli</p> <hr style="width: 20%; margin-left: auto; margin-right: auto;"/> <p style="text-align: center;">President of the Assembly of the Republic of Kosovo</p>	<p style="text-align: center;"><b>Član 4</b> <b>Stupanje na snagu</b></p> <p>Ovaj zakon stupa na snagu petnaest (15) dana nakon objavljivanja u Službenom glasniku Republike Kosova.</p> <p style="text-align: right;">Kadri Veseli</p> <hr style="width: 20%; margin-left: auto; margin-right: auto;"/> <p style="text-align: center;">Predsednik Skupštine Republike Kosova</p>

**AGREEMENT**  
**ON THE STATE BORDER**  
**BETWEEN**  
**THE REPUBLIC OF KOSOVO AND MONTENEGRO**

The Republic of Kosovo and Montenegro (hereinafter referred to as: the Parties”),

STARTING FROM the desire to develop and promote friendly and good neighbourly relations,

CONFIRMING mutual commitment to contribute to the promotion of good neighbourly relations, security, stability and cooperation in the region and beyond,

GUIDED BY a desire to faithfully fulfil the obligations assumed in accordance with the Charter of the United Nations, particularly having in mind the respect of the principles of sovereignty, territorial integrity, independence and peaceful settlement of disputes, without threat or use of force,

RESOLVED to establish the state border between the Parties,

HAVE AGREED on the following:

#### **Article 1**

The state border between the Parties (hereinafter referred to as: „the state border”) is a plane which transverses vertically the border line on the surface of the Earth and divides the territory of two states, their air space, underground space and the space under the water’s surface.

#### **Article 2**

The state border between the Parties extends from trisection point of the Republic of Kosovo, the Republic of Albania and Montenegro in the southern part, with the coordinates:

##### **Republic of Kosovo**

$\varphi=42^{\circ}33'21.24494''$ ..... $\lambda=20^{\circ}04'38.33552''$   $H_{\pm}2397.6799$  (elipsoidal)

##### **Republic of Albania**

$\varphi=42^{\circ}33'21.25887''$   $\lambda=20^{\circ}04'38.33549''$   $H_{\pm}2352.99$  ( orthometric) and

## Montenegro

$\varphi=42^{\circ}33'21.24502''$   $\lambda=20^{\circ}04'38.33553''$   $H=2397.6763$  (elipsoidal)

from trisection point of the Republic of Kosovo, Montenegro, and the Republic of Serbia in the northern part, with coordinates  $Y=7447537,16$  and  $X=4743430,07$ .

Data on the extending of the state border are included in the following border documents, which are an integral part of this Agreement:

-Topographic maps on a scale of 1:25000 in digital form, with the inserted border line and coordinates of the main border break points (Annex 1);

-Textual description of the main border break points on the extending of the state border between the Republic of Kosovo and Montenegro with the list of coordinates of all border break points (Annex 2);

In case of discordances in interpretation of Textual description on the extending of the state border and the border line inserted on the Topographic map with the coordinates of border break points the inserted border line shall prevail.

### Article 3

The Parties agree that the state border, determined on the date of signing of this Agreement, shall remain unchanged regardless of the changes that may occur in water streams on the ground, due to natural or artificial causes.

Any artificial change of the state border shall exclusively be the subject to the prior agreement of the Parties and in accordance with the international law.

The Parties shall guarantee that all possible hydro-works on the border rivers and streams, which could have an impact on changing the water flow, shall be performed only by mutual agreement. In order to avoid erosion and changes of river bed and the streambed along the common border line, the Parties agree that they will not cut trees, bushes and forests in the sectors which they are responsible for.

### Article 4

The state border between the Parties shall be marked by border markings.

The state border between the Parties shall be marked within a period of two years from the entry into force of this Agreement.

#### **Article 5**

The Parties guarantee keeping all the border markings and taking all necessary measures to prevent any damage or displacement.

The Parties shall guarantee to place, maintain and renew all border markings along the state border between the Parties and shall cover all the costs arising from these obligations on equal basis.

#### **Article 6**

The State Commissions for the State Border of the Parties shall issue a Common Instruction on marking of the state border, on the maintenance of the border line, on the border markings and the border zone between the Republic of Kosovo and Montenegro.

#### **Article 7**

The State Commissions for the State Border of the Parties shall form a Joint Working Body, which shall be responsible to perform, on the basis of the documents referred to in the Article 2 of this Agreement, marking of the state border determined by this Agreement on the ground and to compile documentation on the common state border, by which the manner of marking and specific position of the border markings shall be described.

During the process of marking the state border on the ground, the Joint Working Body shall follow up the data contained in the cadastral plans.

Starting from local, geographic and economic conditions, the Joint Working Body shall, during the process of marking the state border, have the possibility to make, by mutual agreement, necessary and balanced corrections. Documentation on the state border shall be made in two original copies, one for each of the Parties.

#### **Article 8**

The Parties shall protect the environment and the nature in the border zone, in accordance with ratified international agreements and national legislation.

#### **Article 9**

Possible disputes in implementation of this Agreement shall be resolved by the Governments of the Parties through diplomatic channels.

#### Article 10

This Agreement is concluded for an indefinite period of time.

#### Article 11

Some provisions of this Agreement may be amended only by mutual agreement of the Parties.

Amendments to this Agreement require the same procedure stipulated for its adoption and entry into force.

#### Article 12

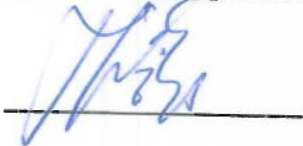
This Agreement is subject to ratification and enters into force on the day of the receipt of the last written notice sent through diplomatic channels, by which the Parties inform each other of the accomplishment of their respective internal legal procedures necessary for its entry into force.

Signed in Vienna, on 26 August 2015, in two originals, each in Albanian, Montenegrin, and English languages, all texts being equally authentic.

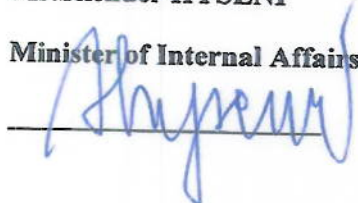
In case of any discrepancy regarding interpretation of this Agreement, the English text shall apply.

#### FOR THE REPUBLIC OF KOSOVO

**Mr. Hashim THAÇI,**  
First Deputy Prime Minister and  
Minister of Foreign Affairs



**Mr. Skender HYSENI**  
Minister of Internal Affairs



#### FOR MONTENEGRO

**Prof. Dr. Igor LUKŠIĆ**  
Deputy Prime Minister  
Minister of Foreign Affairs  
and European Integrations



**MSc. Raško KONJEVIĆ**  
Minister of Interior





Coordinates of the main border breaking points at the border line between the Republic of Kosovo and Montenegro

Coordinate system: Gauss Kruger

Nr	Y	X
B28/IV	7424668.98	4712817.51
1	7424817.06	4713239.63
2	7425027.58	4713713.38
3	7425262.14	4714183.74
4	7425251.52	4714483.96
5	7425605.13	4714916.96
6	7425528.52	4715359.41
7	7425391.91	4715758.27
8	7425356.73	4716435.87
9	7424759.45	4717523.59
10	7424499.45	4718255.78
11	7424353.20	4718537.50
12	7424557.11	4719050.46
13	7424618.28	4719557.06
14	7424617.94	4720038.38
15	7425092.24	4720596.42
16	7425848.57	4721381.43
17	7426238.10	4722236.90
18	7427353.02	4722999.87
19	7427628.49	4723839.63
20	7426215.15	4725064.13
21	7425918.69	4725232.33
22	7425728.65	4725338.43
23	7425407.82	4726321.78
24	7425316.92	4726600.42
25	7424078.46	4726641.56
26	7423704.40	4727143.40
27	7422949.81	4727152.68
28	7421550.19	4728491.91
29	7421228.02	4728578.41
30	7421103.81	4729607.57
31	7421287.34	4730134.17
32	7419827.19	4729964.81
33	7419932.43	4730358.16
34	7420802.80	4730816.68
35	7421160.58	4731152.10
36	7419820.39	4732351.12
37	7419732.39	4733412.85
38	7420171.31	4733850.15
39	7420307.63	4734438.17
40	7420611.12	4736104.88
41	7421712.94	4736771.54
42	7422479.75	4737014.16
43	7423093.40	4737478.52

Nr	Y	X
44	7423585.81	4737617.79
45	7424385.53	4737156.37
46	7425229.36	4737153.82
47	7426090.83	4737273.24
48	7426644.08	4737325.98
49	7427179.40	4736909.70
50	7427088.58	4736585.69
51	7428369.78	4735705.24
52	7434218.33	4733757.91
53	7435887.50	4733920.74
54	7429070.72	4735568.26
55	7429933.73	4735156.83
56	7430593.46	4734829.92
57	7430777.77	4735799.90
58	7431282.71	4736356.41
59	7432313.96	4735606.93
60	7432745.59	4734989.84
61	7433539.77	4734690.26
62	7434598.72	4734342.16
63	7435078.01	4734329.70
64	7436920.70	4734605.20
65	7437759.72	4734554.42
66	7437964.43	4735008.52
67	7439085.73	4735255.12
68	7439328.66	4736145.58
69	7439922.12	4736988.83
70	7440404.18	4737492.27
71	7440179.74	4738544.50
72	7440139.07	4740245.53
73	7439293.32	4740983.35
74	7439478.26	4741312.90
75	7440442.51	4741708.70
76	7441234.73	4742193.24
77	7441665.69	4743177.68
78	7442011.00	4742673.04
79	7442702.97	4742596.07
80	7443050.24	4743779.26
81	7444485.02	4743750.03
82	7444846.54	4742653.81
83	7445484.31	4743444.45
84	7445991.41	4743634.53
85	7446571.62	4743653.64
86	7447537.93	4743429.20

Coordinates of the auxiliary border breaking points at the border line between the Republic of Kosovo and Montenegro

Coordinate system: Gauss Kruger

Br	Y	X	Br	Y	X
B29/IV/1	7424783.47	4713056.37	9/4	7424672.41	4717659.68
B28/IV/2	7424806.86	4713195.74	9/5	7424660.54	4717682.97
1/1	7424888.34	4713366.12	9/6	7424646.01	4717710.93
1/2	7424903.85	4713396.40	9/7	7424594.76	4717789.37
1/3	7424922.16	4713411.39	9/8	7424566.32	4717842.34
1/4	7424934.34	4713489.96	9/9	7424530.85	4717905.15
1/5	7424935.80	4713496.51	9/10	7424516.79	4717977.03
1/6	7424952.55	4713555.41	9/11	7424507.73	4718072.86
1/7	7424984.19	4713623.86	9/12	7424506.17	4718144.53
2/1	7425072.84	4713777.48	9/13	7424495.23	4718193.59
2/2	7425121.24	4713932.64	10/1	7424485.07	4718293.75
2/3	7425166.19	4714009.33	10/2	7424435.23	4718359.53
2/4	7425206.15	4714077.60	10/3	7424412.26	4718387.81
2/5	7425226.55	4714111.42	10/4	7424361.17	4718485.93
2/6	7425246.02	4714146.58	11/1	7424366.95	4718616.09
2/7	7425256.83	4714161.68	11/2	7424369.45	4718642.55
3/1	7425235.08	4714233.59	11/3	7424419.29	4718721.66
3/2	7425244.45	4714261.47	11/4	7424434.78	4718739.21
3/3	7425242.68	4714293.73	11/5	7424462.73	4718803.90
3/4	7425237.16	4714310.80	11/6	7424486.95	4718845.00
3/5	7425229.15	4714348.16	11/7	7424501.01	4718874.53
3/6	7425221.97	4714381.56	11/8	7424529.61	4718922.50
3/7	7425222.39	4714406.33	11/9	7424556.64	4718966.09
3/8	7425233.83	4714443.06	12/1	7424562.11	4719084.21
4/1	7425270.05	4714501.96	12/2	7424575.54	4719142.96
4/2	7425309.48	4714540.26	12/3	7424612.89	4719225.46
4/3	7425327.28	4714554.72	12/4	7424617.26	4719282.96
4/4	7425356.94	4714581.78	12/5	7424642.57	4719349.68
4/5	7425385.87	4714608.94	12/6	7424615.39	4719408.75
4/6	7425399.29	4714622.36	12/7	7424597.14	4719479.86
4/7	7425405.22	4714629.54	13/1	7424626.06	4719612.90
4/8	7425424.27	4714647.75	13/2	7424622.84	4719690.43
4/9	7425437.79	4714663.36	13/3	7424625.28	4719740.71
4/10	7425466.52	4714689.28	13/4	7424615.83	4719849.83
4/11	7425478.38	4714704.68	13/5	7424628.51	4719908.57
4/12	7425492.53	4714719.87	13/6	7424623.39	4719967.72
4/13	7425518.13	4714748.59	14/1	7424655.99	4720051.53
4/14	7425536.26	4714771.90	14/2	7424683.13	4720085.10
4/15	7425571.41	4714817.17	14/3	7424704.04	4720109.57
4/16	7425603.99	4714911.57	14/4	7424728.62	4720144.50
5/1	7425609.29	4715019.47	14/5	7424750.20	4720209.24
5/2	7425610.33	4715045.27	14/6	7424793.47	4720279.21
5/3	7425604.92	4715121.97	14/7	7424814.39	4720330.37
5/4	7425590.77	4715238.31	14/8	7424825.62	4720357.29
5/5	7425555.63	4715307.14	14/9	7424862.11	4720380.43
6/1	7425535.69	4715395.91	14/10	7424907.27	4720407.79
6/2	7425516.08	4715587.63	14/11	7424952.95	4720432.05
6/3	7425465.98	4715884.61	14/12	7425016.70	4720503.69
7/1	7425386.23	4715815.45	14/13	7425069.20	4720572.59
7/2	7425388.45	4715861.18	15/1	7425126.70	4720639.08
7/3	7425395.46	4715916.88	15/2	7425147.56	4720658.06
7/4	7425388.62	4716000.17	15/3	7425195.13	4720691.81
7/5	7425386.80	4716051.75	15/4	7425215.80	4720710.33
7/6	7425371.23	4716072.19	15/5	7425253.41	4720734.94
7/7	7425385.73	4716090.56	15/6	7425281.31	4720747.83
7/8	7425421.08	4716133.98	15/7	7425321.07	4720757.83
7/9	7425422.23	4716137.28	15/8	7425343.26	4720751.19
7/10	7425423.22	4716143.21	15/9	7425384.35	4720754.78
7/11	7425424.21	4716146.26	15/10	7425446.23	4720779.94
7/12	7425429.07	4716188.09	15/11	7425485.99	4720837.52
7/13	7425432.37	4716180.86	15/12	7425534.43	4720861.42
7/14	7425431.79	4716204.92	15/13	7425606.54	4720915.25
7/15	7425441.27	4716231.70	15/14	7425648.18	4720958.30
7/16	7425437.15	4716276.36	15/15	7425674.97	4721029.47
7/17	7425433.93	4716312.20	15/16	7425794.82	4721137.60
8/1	7425231.66	4716634.43	15/17	7425789.51	4721217.36
8/2	7425180.00	4716677.03	15/18	7425810.99	4721262.05
8/3	7425143.66	4716700.02	16/1	7425915.36	4721442.98
8/4	7425120.59	4716741.05	16/2	7425942.55	4721466.74
8/5	7425075.28	4716859.94	16/3	7425977.63	4721505.18
8/6	7425051.71	4716929.15	16/4	7425977.79	4721535.96
8/7	7425018.01	4717002.89	16/5	7425980.60	4721581.90
8/8	7424995.52	4717088.89	16/6	7425981.69	4721653.38
8/9	7424931.42	4717198.99	16/7	7425983.88	4721666.97
8/10	7424914.61	4717271.82	16/8	7425990.13	4721742.52
8/11	7424900.52	4717332.96	16/9	7426013.88	4721797.13
8/12	7424853.39	4717416.58	16/10	7426036.69	4721817.21
8/13	7424860.48	4717445.67	16/11	7426062.71	4721837.05
8/14	7424811.21	4717495.19	16/12	7426042.86	4721867.60
8/15	7424776.44	4717505.07	16/13	7426057.63	4721894.32
8/16	7424764.91	4717511.87	16/14	7426088.41	4721915.33
9/1	7424723.35	4717568.28	16/15	7426087.55	4721963.93

9/2	7424659.91	4717617.34
9/3	7424661.32	4717640.78

16/16	7426101.85	4722007.05
16/17	7426105.21	4722059.32

Br	Y	X
16/18	7426128.99	4722080.18
16/19	7426156.38	4722122.21
16/20	7426161.15	4722156.52
17/1	7426286.54	4722291.11
17/2	7426389.74	4722431.90
17/3	7426500.76	4722540.49
17/4	7426674.12	4722651.74
17/5	7426791.93	4722718.77
17/6	7426957.40	4722808.46
17/7	7427064.82	4722866.27
18/1	7427442.01	4723182.76
18/2	7427474.43	4723349.16
21/1	7425750.68	4725327.66
23/1	7425349.71	4726499.91
26/1	7423693.90	4727139.37
26/2	7423667.37	4727127.84
26/3	7423644.59	4727119.03
26/4	7423629.59	4727108.90
26/5	7423605.03	4727082.75
26/6	7423546.15	4727090.25
26/7	7423525.72	4727090.62
26/8	7423499.37	4727093.25
26/9	7423489.43	4727094.09
26/10	7423462.72	4727090.08
26/11	7423445.84	4727077.50
26/12	7423423.90	4727076.09
26/13	7423397.09	4727062.03
26/14	7423368.78	4727061.75
26/15	7423344.87	4727052.93
26/16	7423314.03	4727056.96
26/17	7423285.06	4727078.34
26/18	7423206.50	4727127.46
26/19	7423175.75	4727134.50
26/20	7423150.53	4727142.93
26/21	7423101.59	4727153.53
26/22	7423073.28	4727144.90
26/23	7422973.72	4727146.31
26/24	7422954.31	4727142.28
26/25	7422953.18	4727145.46
27/1	7422947.89	4727158.13
27/2	7422938.72	4727168.85
27/3	7422925.29	4727183.01
27/4	7422913.54	4727195.07
27/5	7422890.32	4727208.98
27/6	7422863.38	4727234.25
27/7	7422865.14	4727256.00
27/8	7422861.32	4727272.85
27/9	7422843.29	4727297.25
27/10	7422841.53	4727316.35
27/11	7422826.83	4727357.80
27/12	7422826.25	4727386.70
27/13	7422816.74	4727403.94
27/14	7422811.85	4727432.94
27/15	7422829.48	4727469.19
27/16	7422833.30	4727508.57
27/17	7422809.30	4727565.30
27/18	7422791.17	4727589.69
27/19	7422751.98	4727611.74
27/20	7422719.85	4727644.85
27/21	7422671.84	4727694.82
27/22	7422653.33	4727701.97
27/23	7422626.29	4727725.87
27/24	7422587.98	4727747.43
27/25	7422590.43	4727784.87
27/26	7422551.73	4727791.12
27/27	7422540.86	4727790.24
27/28	7422537.33	4727796.31
27/29	7422538.56	4727807.41
27/30	7422534.88	4727837.07
27/31	7422524.26	4727844.84
27/32	7422517.32	4727886.65
27/33	7422521.16	4727908.40
27/34	7422514.04	4727918.81
27/35	7422510.48	4727949.00
27/36	7422489.57	4727967.47
27/37	7422486.86	4727984.62
27/38	7422461.63	4727999.90
27/39	7422454.41	4728004.59
27/40	7422413.82	4728034.50
27/41	7422393.38	4728051.84
27/42	7422358.63	4728054.94
27/43	7422328.88	4728083.53

Br	Y	X
27/46	7422288.29	4728188.06
27/47	7422286.60	4728243.37
27/48	7422280.54	4728275.72
27/49	7422207.57	4728321.00
27/50	7422194.26	4728347.53
27/51	7422131.63	4728393.65
27/52	7422099.94	4728405.84
27/53	7422018.85	4728433.69
27/54	7421993.54	4728427.12
27/55	7421952.38	4728423.19
27/56	7421934.38	4728429.28
27/57	7421895.29	4728440.72
27/58	7421859.57	4728425.81
27/59	7421840.26	4728433.50
27/60	7421798.44	4728456.66
27/61	7421769.86	4728471.00
27/62	7421745.48	4728476.34
27/63	7421692.60	4728483.94
27/64	7421671.88	4728484.50
27/65	7421605.04	4728480.37
27/66	7421569.23	4728489.94
28/1	7421482.32	4728490.69
28/2	7421448.48	4728493.59
28/3	7421428.79	4728509.25
29/1	7421122.92	4729089.36
30/1	7421111.73	4729637.75
31/1	7421240.14	4730129.54
31/2	7421172.98	4730128.43
31/3	7421139.74	4730132.62
31/4	7421115.07	4730119.78
31/5	7421085.60	4730096.39
31/6	7421022.81	4730070.78
31/7	7420994.11	4730064.69
31/8	7420961.30	4730048.93
31/9	7420922.95	4730032.71
31/10	7420888.04	4730019.81
31/11	7420852.69	4730007.39
31/12	7420826.13	4729974.58
31/13	7420791.52	4729979.80
31/14	7420729.25	4729964.13
31/15	7420658.75	4729977.40
31/16	7420578.05	4729961.21
31/17	7420525.71	4729977.23
31/18	7420467.46	4729953.25
31/19	7420426.26	4729940.74
31/20	7420345.05	4729944.94
31/21	7420298.88	4729930.72
31/22	7420246.02	4729949.82
31/23	7420175.61	4729951.02
31/24	7420123.01	4729950.85
31/25	7420113.51	4729953.50
31/26	7420060.48	4729962.63
31/27	7420004.11	4729963.51
31/28	7419958.37	4729973.83
31/29	7419884.96	4729952.13
31/30	7419826.93	4729954.27
31/31	7419822.00	4729956.40
32/1	7419876.63	4730270.15
33/1	7419999.66	4730384.41
33/2	7420054.00	4730383.04
33/3	7420236.68	4730316.81
33/4	7420377.10	4730351.20
33/5	7420455.59	4730429.97
33/6	7420479.90	4730470.48
33/7	7420507.09	4730498.48
33/8	7420571.04	4730532.49
33/9	7420604.47	4730542.71
33/10	7420658.25	4730570.79
33/11	7420698.80	4730581.85
33/12	7420780.92	4730619.78
33/13	7420765.42	4730624.64
33/14	7420802.58	4730689.39
34/1	7421004.12	4730909.36
34/2	7421071.92	4730652.95
34/3	7421088.03	4730665.87
34/4	7421116.99	4730998.10
34/5	7421129.25	4731025.66
34/6	7421142.99	4731035.84
34/7	7421158.70	4731052.16
34/8	7421168.88	4731071.95
34/9	7421172.19	4731099.67
35/1	7421109.38	4731136.72

27/44	7422308.54	4728129.47
27/45	7422307.41	4728163.87

Br	Y	X
35/4	7420611.36	4731231.92
35/5	7420751.16	4731295.79
35/6	7420708.31	4731343.23
35/7	7420650.65	4731379.38
35/8	7420596.51	4731387.93
35/9	7420535.42	4731356.07
35/10	7420445.13	4731368.74
35/11	7420403.33	4731384.53
35/12	7420344.86	4731419.21
35/13	7420284.99	4731469.34
35/14	7420216.46	4731541.39
35/15	7420158.55	4731566.83
35/16	7420114.24	4731614.60
35/17	7420090.36	4731602.50
35/18	7420067.16	4731588.91
35/19	7420047.45	4731615.54
35/20	7420039.84	4731643.29
35/21	7420023.38	4731681.77
35/22	7420010.85	4731708.08
35/23	7419997.56	4731723.68
35/24	7419962.76	4731756.48
35/25	7419944.68	4731778.43
35/26	7419929.59	4731798.51
35/27	7419913.50	4731825.02
35/28	7419886.74	4731859.19
35/29	7419870.28	4731894.30
35/30	7419860.80	4731920.31
35/31	7419852.75	4731932.03
35/32	7419825.94	4731951.74
35/33	7419799.12	4731980.24
35/34	7419767.63	4732028.95
35/35	7419749.85	4732079.58
35/36	7419738.38	4732146.31
35/37	7419745.24	4732145.94
35/38	7419756.78	4732185.17
35/39	7419793.95	4732270.98
36/1	7419826.62	4732383.36
36/2	7419852.88	4732488.50
36/3	7419855.56	4732507.21
36/4	7419855.56	4732533.28
36/5	7419853.38	4732546.44
36/6	7419841.53	4732569.20
36/7	7419848.89	4732596.89
36/8	7419870.96	4732649.09
36/9	7419872.59	4732666.17
36/10	7419870.47	4732690.37
36/11	7419872.46	4732723.67
36/12	7419882.56	4732751.36
36/13	7419887.93	4732788.41
36/14	7419830.55	4732939.96
36/15	7419802.05	4733022.08
36/16	7419797.31	4733108.02
36/17	7419783.09	4733229.63
36/18	7419784.95	4733312.26
36/19	7419757.96	4733350.86
37/1	7419779.04	4733525.29
37/2	7419792.26	4733552.11
37/3	7419798.18	4733565.52
37/4	7419831.55	4733665.18
37/5	7419841.85	4733689.25
37/6	7419866.41	4733719.25
37/7	7419923.91	4733837.24
37/8	7419943.62	4733812.85
37/9	7419947.61	4733811.48
37/10	7419959.89	4733809.36
37/11	7419992.88	4733811.04
37/12	7420085.74	4733821.21
37/13	7420131.39	4733827.38
38/1	7420188.45	4733884.07
38/2	7420194.94	4733906.40
38/3	7420184.40	4733985.66
38/4	7420228.99	4734109.52
38/5	7420222.19	4734155.10
38/6	7420219.08	4734238.92
39/1	7420395.57	4734534.96
39/2	7420483.62	4734627.88
39/3	7420489.36	4734679.33
39/4	7420513.81	4734747.00
39/5	7420493.16	4734820.65
39/6	7420470.65	4734890.43
39/7	7420463.48	4734913.44
39/8	7420449.45	4734970.07

35/2	7421040.44	4731149.81
35/3	7420960.12	4731157.66

Br	Y	X
39/11	7420394.57	4736167.33
39/12	7420388.64	4735263.05
39/13	7420397.62	4735290.99
39/14	7420428.18	4735341.51
39/15	7420419.64	4735385.85
39/16	7420439.85	4735434.43
39/17	7420467.87	4735558.81
39/18	7420477.14	4735575.58
39/19	7420528.75	4735685.76
39/20	7420545.29	4735722.91
39/21	7420552.40	4735746.08
39/22	7420577.01	4735769.08
39/23	7420580.20	4735784.26
39/24	7420549.76	4735853.37
39/25	7420533.87	4735884.69
39/26	7420565.34	4735956.36
39/27	7420591.63	4736051.27
40/1	7420645.24	4736101.84
40/2	7420672.40	4736102.08
40/3	7420734.88	4736096.01
40/4	7420838.66	4736126.85
40/5	7420978.87	4736156.85
40/6	7421051.18	4736187.09
40/7	7421235.97	4736074.82
40/8	7421239.71	4736077.69
40/9	7421280.53	4736115.34
40/10	7421281.94	4736117.05
40/11	7421308.18	4736249.66
40/12	7421311.14	4736267.11
40/13	7421323.29	4736448.54
40/14	7421329.08	4736499.97
40/15	7421331.01	4736515.41
40/16	7421406.17	4736556.85
40/17	7421467.82	4736586.14
40/18	7421547.41	4736626.45
40/19	7421620.86	4736657.90
40/20	7421665.94	4736682.53
40/21	7421708.58	4736704.90
41/1	7421773.57	4736869.75
41/2	7421866.89	4736940.60
41/3	7421889.37	4736955.70
41/4	7421894.94	4736959.22
41/5	7421901.97	4736964.10
41/6	7421936.60	4736985.56
41/7	7421994.73	4737003.72
41/8	7422070.12	4737081.85
41/9	7422117.35	4737112.94
41/10	7422159.92	4737137.69
41/11	7422228.80	4737136.33
41/12	7422289.47	4737127.25
41/13	7422357.81	4737055.95
42/1	7422524.25	4737055.60
42/2	7422584.22	4737107.60
42/3	7422584.65	4737099.77
42/4	7422624.73	4737167.44
42/5	7422648.76	4737182.31
42/6	7422680.82	4737210.58
42/7	7422708.63	4737245.32
42/8	7422884.45	4737262.01
42/9	7422786.18	4737298.23
42/10	7422851.35	4737350.45
42/11	7422930.02	4737385.76
42/12	7422989.29	4737405.86
42/13	7423037.09	4737459.56
43/1	7423133.36	4737482.94
43/2	7423233.50	4737515.64
43/3	7423295.26	4737535.17
43/4	7423514.16	4737606.81
43/5	7423517.29	4737607.90
43/6	7423526.84	4737612.99
43/7	7423553.03	4737622.01
44/1	7423605.32	4737619.46
44/2	7423643.47	4737601.27
44/3	7423695.23	4737570.33
44/4	7423770.29	4737526.21
44/5	7423837.18	4737498.61
44/6	7423877.34	4737483.05
44/7	7423913.64	4737463.28
44/8	7423944.23	4737437.61
44/9	7423978.24	4737408.79
44/10	7423983.80	4737389.36
44/11	7424017.62	4737363.70

39/9	7420439.47	4735042.66
39/10	7420436.29	4735061.06

Br	Y	X
44/14	7424099.79	4737253.57
44/15	7424157.80	4737237.40
44/16	7424283.57	4737158.12
44/17	7424331.56	4737150.39
45/1	7424486.51	4737137.56
45/2	7424556.65	4737157.77
45/3	7424643.66	4737157.86
45/4	7424740.43	4737159.97
45/5	7424835.61	4737153.29
45/6	7425014.21	4737148.46
45/7	7425044.18	4737148.46
45/8	7425149.12	4737161.82
45/9	7425212.58	4737147.14
46/1	7425406.90	4737101.61
46/2	7425482.62	4737096.51
46/3	7425489.26	4737083.68
46/4	7425555.53	4737071.47
46/5	7425582.68	4737087.37
46/6	7425668.73	4737113.48
46/7	7425707.49	4737118.05
46/8	7425738.87	4737112.69
46/9	7425753.76	4737109.81
46/10	7425849.05	4737194.76
46/11	7425918.06	4737264.10
47/1	7426142.44	4737295.71
47/2	7426316.55	4737330.72
47/3	7426370.96	4737319.98
47/4	7426534.13	4737338.45
48/1	7426792.78	4737210.43
50/1	7427142.25	4736554.35
50/2	7427186.80	4736551.22
50/3	7427218.60	4736489.01
50/4	7427241.21	4736437.20
50/5	7427779.32	4736046.38
50/6	7427886.55	4736001.90
50/7	7428004.30	4735984.75
50/8	7428075.19	4735859.81
50/9	7428146.33	4735859.81
50/10	7428199.61	4735840.14
50/11	7428300.90	4735803.20
50/12	7428338.64	4735780.19
52/1	7428401.45	4735698.78
52/2	7428455.13	4735705.18
52/3	7428465.47	4735748.79
52/4	7428491.47	4735752.65
52/5	7428543.35	4735757.39
52/6	7428543.35	4735757.39
52/7	7428666.91	4735758.52
52/8	7428740.22	4735734.47
52/9	7428886.64	4735741.90
52/1	7428401.45	4735698.78
52/2	7428455.13	4735705.18
52/3	7428465.47	4735748.79
52/4	7428491.47	4735752.65
52/5	7428543.35	4735757.39
52/6	7428605.70	4735758.52
52/7	7428666.91	4735758.52
52/8	7428740.22	4735734.47
52/9	7428886.64	4735741.90
52/10	7428933.84	4735720.71
52/11	7428957.44	4735704.34
52/12	7428984.16	4735652.12
52/13	7429006.15	4735622.79
52/14	7429017.50	4735608.93
52/15	7429035.27	4735588.35
53/1	7429120.44	4735590.05
53/2	7429161.41	4735577.50
53/3	7429197.57	4735555.41
53/4	7429336.46	4735487.72
53/5	7429363.27	4735481.29
53/6	7429404.85	4735484.72
53/7	7429440.10	4735442.42
53/8	7429451.41	4735454.84
53/9	7429466.89	4735447.10
53/10	7429582.34	4735391.20
54/1	7429688.59	4735111.17
54/2	7430030.78	4735057.00
54/3	7430128.00	4735084.60
54/4	7430193.28	4734965.85
54/5	7430246.23	4734958.83
54/6	7430339.84	4734900.06
54/7	7430405.61	4734884.43

44/12	7424047.67	4737333.46
44/13	7424075.10	4737303.84

Br	Y	X
56/1	7431581.70	4736057.82
57/1	7432398.08	4735500.68
57/2	7432514.49	4735384.48
57/3	7432571.00	4735309.27
57/4	7432719.95	4735174.64
57/5	7432709.80	4735030.89
58/1	7432772.52	4734948.27
58/2	7432810.53	4734901.72
58/3	7432878.84	4734885.88
58/4	7433005.86	4734858.26
58/5	7433291.77	4734764.61
58/6	7433334.84	4734672.24
59/1	7433808.89	4734302.40
59/2	7434101.20	4733881.13
59/3	7434183.38	4733842.35
60/1	7434258.30	4733871.87
60/2	7434333.88	4733992.89
60/3	7434442.08	4734141.51
61/1	7434712.30	4734299.27
61/2	7434857.30	4734294.89
61/3	7435021.78	4734307.87
62/1	7435160.21	4734295.62
62/2	7435186.66	4734268.27
62/3	7435223.74	4734271.52
62/4	7435255.71	4734243.44
62/5	7435267.56	4734245.63
62/6	7435295.56	4734235.73
62/7	7435334.02	4734223.97
62/8	7435439.02	4734208.85
62/9	7435479.35	4734189.68
62/10	7435528.84	4734154.59
62/11	7435545.64	4734138.20
62/12	7435596.92	4734108.91
62/13	7435628.32	4734081.56
62/14	7435670.76	4734071.83
62/15	7435735.19	4734017.62
62/16	7435740.22	4733995.31
62/17	7435767.40	4733985.49
62/18	7435788.42	4733939.64
63/1	7435911.03	4733902.24
63/2	7435956.23	4733884.47
63/3	7435991.79	4733856.90
63/4	7436005.10	4733898.61
63/5	7436018.20	4733927.01
63/6	7436009.74	4733941.26
63/7	7435993.06	4733944.82
63/8	7435985.95	4733963.52
63/9	7435995.56	4733979.81
63/10	7435990.47	4734001.63
63/11	7435986.52	4734019.76
63/12	7435999.82	4734076.95
63/13	7436028.92	4734125.87
63/14	7436076.98	4734144.31
63/15	7436116.88	4734168.55
63/16	7436144.92	4734171.22
63/17	7436163.69	4734160.82
63/18	7436187.93	4734173.58
63/19	7436210.00	4734175.61
63/20	7436240.41	4734211.05
63/21	7436267.19	4734228.76
63/22	7436275.46	4734237.95
63/23	7436294.10	4734239.93
63/24	7436312.99	4734267.79
63/25	7436343.02	4734293.24
63/26	7436347.85	4734304.94
63/27	7436352.94	4734306.79
63/28	7436370.31	4734300.30
63/29	7436379.28	4734319.89
63/30	7436418.85	4734341.20
63/31	7436448.68	4734367.35
63/32	7436450.78	4734379.58
63/33	7436481.00	4734401.57
63/34	7436482.78	4734413.15
63/35	7436518.09	4734427.34
63/36	7436543.34	4734441.20
63/37	7436550.66	4734454.31
63/38	7436569.04	4734468.88
63/39	7436580.62	4734471.80
63/40	7436614.27	4734480.80
63/41	7436673.43	4734516.40
63/42	7436688.13	4734518.24
63/43	7436693.72	4734526.19

54/8	7430509.95	4734844.50
55/1	7430751.46	4735629.32

53/44	7436710.14	4734533.70
53/45	7436725.15	4734549.28

Br	Y	X
63/46	7436745.06	4734551.19
63/47	7436780.37	4734547.38
63/48	7436839.02	4734574.79
63/49	7436879.54	4734591.14
64/1	7436989.68	4734801.32
64/2	7436985.33	4734597.70
64/3	7437011.16	4734607.11
64/4	7437056.64	4734802.79
64/5	7437073.25	4734803.93
64/6	7437095.77	4734596.68
64/7	7437149.33	4734590.44
64/8	7437168.10	4734591.97
64/9	7437180.48	4734589.86
64/10	7437300.61	4734574.97
64/11	7437392.54	4734568.57
64/12	7437442.62	4734549.03
64/13	7437664.79	4734530.15
65/1	7437831.55	4734679.20
65/2	7437872.32	4734778.62
65/3	7437906.18	4734895.58
65/4	7437919.53	4734970.28
66/1	7438147.47	4735020.53
66/2	7438302.95	4735022.61
66/3	7438470.69	4735080.40
66/4	7438573.74	4735118.12
66/5	7438646.44	4735143.45
66/6	7438710.19	4735165.67
68/1	7439439.17	4736238.37
68/2	7439473.34	4736370.54
68/3	7439535.50	4736412.73
68/4	7439472.59	4736490.57
68/5	7439558.46	4736561.70
68/6	7439646.39	4736593.62
68/7	7439728.34	4736598.66
68/8	7439757.09	4736692.94
68/9	7439807.68	4736777.32
68/10	7439859.02	4736840.60
69/1	7439999.22	4737047.26
69/2	7440054.48	4737066.49
69/3	7440121.50	4737087.21
69/4	7440191.50	4737127.91
69/5	7440260.76	4737206.87
69/6	7440286.15	4737253.54
69/7	7440369.97	4737373.58
71/1	7440095.34	4739593.64
72/1	7439970.55	4740269.90
72/2	7439876.89	4740283.83
72/3	7439775.22	4740321.68
72/4	7439636.39	4740477.03
72/5	7439626.62	4740498.53
72/6	7439559.48	4740567.87
72/7	7439530.06	4740609.38
72/8	7439473.65	4740749.86
72/9	7439452.10	4740793.06
72/10	7439438.43	4740819.58
72/11	7439428.04	4740847.01
72/12	7439406.28	4740890.01
72/13	7439384.07	4740930.52
73/1	7439329.72	4741023.80
73/2	7439352.19	4741044.92
73/3	7439363.78	4741056.18
73/4	7439397.98	4741121.33
73/5	7439405.16	4741137.99
73/6	7439425.11	4741186.10
73/7	7439458.58	4741246.41
74/1	7439493.58	4741344.61
74/2	7439508.95	4741384.51
74/3	7439527.19	4741397.12
74/4	7439555.41	4741411.58
74/5	7439596.21	4741422.55
74/6	7439652.97	4741434.22
74/7	7439678.87	4741450.56
74/8	7439730.27	4741478.84
74/9	7439751.33	4741476.64
74/10	7439799.93	4741479.68
74/11	7439846.92	4741445.25
74/12	7439887.73	4741413.24
74/13	7439927.24	4741431.02
74/14	7439964.28	4741415.94
74/15	7440016.88	4741431.40
74/16	7440070.03	4741444.68
74/17	7440105.05	4741474.16

Br	Y	X
74/20	7440216.40	4741528.06
74/21	7440247.55	4741525.41
74/22	7440326.53	4741560.00
74/23	7440368.45	4741577.89
74/24	7440393.01	4741592.19
74/25	7440404.15	4741652.85
75/1	7440512.63	4741751.90
75/2	7440535.83	4741770.48
75/3	7440549.78	4741774.50
75/4	7440625.28	4741798.74
75/5	7440678.76	4741807.76
75/6	7440732.36	4741810.12
75/7	7440850.91	4741886.79
75/8	7440889.36	4741902.62
75/9	7440962.84	4741951.57
75/10	7441028.38	4741975.35
75/11	7441053.14	4741989.73
75/12	7441109.75	4742045.36
75/13	7441142.63	4742111.99
75/14	7441168.49	4742149.92
76/1	7441244.76	4742260.35
76/2	7441206.83	4742337.02
76/3	7441165.53	4742389.45
76/4	7441223.18	4742477.66
76/5	7441172.84	4742606.24
76/6	7441491.41	4743027.85
76/7	7441544.88	4743054.68
76/8	7441582.70	4743083.73
76/9	7441579.80	4743098.80
76/10	7441621.67	4743143.76
77/1	7441685.70	4743144.28
77/2	7441706.75	4743150.37
77/3	7441765.16	4743096.60
77/4	7441798.07	4743064.54
77/5	7441810.80	4743044.17
77/6	7441845.14	4742968.37
77/7	7441883.94	4742922.90
77/8	7441911.77	4742872.49
77/9	7441945.76	4742828.42
77/10	7441988.04	4742767.12
77/11	7441998.59	4742757.06
78/1	7442048.06	4742656.33
78/2	7442168.41	4742667.70
78/3	7442240.56	4742650.76
78/4	7442290.20	4742617.30
78/5	7442411.88	4742599.54
78/6	7442581.41	4742570.08
79/1	7442694.76	4742730.92
79/2	7442697.03	4742858.88
79/3	7442850.47	4743256.82
79/4	7442890.62	4743310.00
79/5	7442951.62	4743386.18
79/6	7442979.94	4743511.19
79/7	7443004.14	4743581.00
79/8	7443050.24	4743653.42
80/1	7443272.35	4743784.04
80/2	7443351.18	4743790.81
80/3	7443457.05	4743783.89
80/4	7443542.53	4743758.56
80/5	7443604.99	4743739.51
80/6	7443658.03	4743713.81
80/7	7443726.13	4743704.81
80/8	7443781.95	4743719.09
80/9	7443841.63	4743721.29
80/10	7443897.26	4743728.70
80/11	7443932.72	4743746.90
80/12	7443969.10	4743704.25
80/13	7444010.36	4743694.52
80/14	7444072.82	4743718.62
80/15	7444094.26	4743748.87
80/16	7444149.88	4743758.83
80/17	7444232.74	4743748.75
81/1	7444539.58	4743554.57
81/2	7444543.43	4743518.04
81/3	7444543.43	4743453.62
81/4	7444536.97	4743281.39
81/5	7444542.60	4743199.12
81/6	7444567.17	4742982.17
81/7	7444630.08	4742927.51
81/8	7444811.83	4742866.84
83/1	7445553.43	4743465.22
83/2	7445660.27	4743460.93

74/18	7440133.74	4741495.25
74/19	7440175.63	4741507.19

83/3	7445785.05	4743480.84
83/4	7445903.02	4743588.84

Br	Y	X
84/1	7446081.13	4743716.61
84/2	7446256.26	4743709.30
84/3	7446384.69	4743728.90
84/4	7446479.07	4743749.67
85/1	7446609.17	4743535.33
85/2	7446770.83	4743407.50
85/3	7447028.37	4743392.94
85/4	7447136.20	4743385.69
85/5	7447246.36	4743348.08

**TEXTUAL DESCRIPTION OF THE MAIN BORDER BREAK POINTS ON THE  
EXTENDING OF THE STATE BORDER BETWEEN THE REPUBLIC OF KOSOVO  
AND MONTENEGRO WITH THE  
LIST OF COORDINATES OF ALL  
BORDER BREAK POINTS**

The border line starts from the trisection point between the states of the Republic of Kosovo, Montenegro and the Republic of Albania, marked by the boundary marker (the pyramid No. B-28/4), located in the place called "Tromeđa" towards the mountain Bogičevica. From the trisection point, the border line extends northeast, in the length of 450 m, to the point No. 1. The border line continues further on northeast, through the place called ( Bregu i rrafshët/ Ravno Brdo) in the length of 530 m, to the point No. 2. The border line continues in the same direction through the place called (Bregu i rrafshët/Ravno Brdo/) in the length of 530 m, to the point No. 3, which is also the trigonometric point with the altitude of 2204 m. It continues further on to the north in the length of 310 m, to the point No. 4, then it continues to the northeast in the length of 570 m, to the point No. 5. It continues further on to the north in the length of 460 m, to the point No. 6, which is also the trigonometric point with the altitude of 2245 m. It continues further on to the northwest through ( Qafës së Belegut/Ćafa Belega) in the length of 440 m, to the point No. 7. It continues further on to the north in the length of 730 m, to the point No. 8, which is also the altitude of 2312 m, in the place called ( Maja e madhe/ Maja e malle). It continues further on to the northwest in the length of 1280 m, to the point No. 9, which is also the trigonometric point with the altitude of 2405 m, in the place called (Maja e qenit/ Pasji Vrh). It continues further in the same direction in the length of 800 m, to the point No. 10, which is also the altitude of 2284 m (Maja e vogël/ Maja e vogelj). It continues further on to the northwest in the length of 320 m, to the point No. 11. It continues further on to the northeast in the length of 570 m, to the point No. 12, which is also the altitude of 2136 m. The border line continues to the north in the length of 530 m, to the point No. 13, which is also the altitude of 2167 m. It continues further on to the north in the length of 490 m, to the point No. 14. It continues further on to the northeast in the length of 760 m, to the point No. 15, which is also the trigonometric point with the altitude of 2181 m. The border line continues (curvy) towards the northeast in the length of 1200 m, to the point No. 16, which is also the altitude of 2131 m, in the place called (Bregu i pishës/ Pišljiv Krš ). It continues further on to the northeast in the length of 1000 m, to the point No. 17, which is also the trigonometric point with the altitude of 2078 m, in the place called (Maja e bajrakut/Maja e bajrakud). It continues further to the east in the length of 1400 m, to the point No. 18. The border line continues to the northeast through ( Podina e madhe/Velika Podina) in the length of 900 m, to the point No. 19, which is also the trigonometric point with the altitude of 2424 m. The border line turns on to the west in the length of 1870 m, to the point No. 20, It



continues further to the west in the length of 340 m, to the point No. 21, which is also the altitude of 1850 m, positioned on the shore of the (Liqenit të Kuqishtës/ Kućiško jezero (lake). The border line crosses the lake, it continues to the west in the length of 220 m, to the point No. 22. Further on it turns on to the northwest in the length of 1040 m, to the point No. 23, which is also the altitude of 1607 m. It continues in the same direction in the length of 300 m, to the point No. 24, towards ( Neqinat e Kuqishtes/Kućiški Nećinat/). The border line turns on to the west in the length of 1250 m, to the point No. 25. Further on it turns on to the northwest in the length of 630 m, to the point No. 26, which is positioned in the mid of the road Çakorr/Çakor – Pejë/Peć. The border line continues to the west, in the mid of the above-mentioned road in the length 805 m, to the point No. 27, which is in the mid of the above-mentioned road. The border line continues northwest, upstream (Përroi i ndryshkur/ Rđavi potok) in the length of 2200 m, to the point No. 28. It continues further on in the same direction in the length of 340 m, to the point No. 29. The border line turns to the north in the length of 1040 m, to the point No. 30, which is positioned in the place called (Kodra e Kurtit). It continues further on to the northeast in the length of 560 m, to the point No. 31, which is positioned in (Lumin Haxhaj/ Adžovića rijeka)rijeka. The border line turns on to the west, upstream (Lumin Haxhaj/Adžovića rijeka (river) in the length of 1530 m, to the point No. 32, which is also the altitude of 1319 m. The border line leaves the river and turns on to the north in the length of 420 m, to the point No. 33. Further on it turns on to the east through (Breze) in the length of 1150 m, to the point No. 34. The border line continues to the northeast in the length of 540 m, to the point No. 35. Further on it turns on to the west through (Livadhet e Haxhajve/ Livade Adžovića ) in the length of 2150 m, to the point No. 36, which is also the altitude of 1673 m. The border line continues to the north, through (Kodra e Vlajkut/Vlajkovo brdo) in the length of 1100 m, to the point No. 37, which is also the altitude of 1716 m. It continues further on to the northeast in the length of 730 m, to the point No. 38, which is also the trigonometric point with the altitude of 1878 m. The border line turns to the north in the length of 620 m, to the point No. 39.

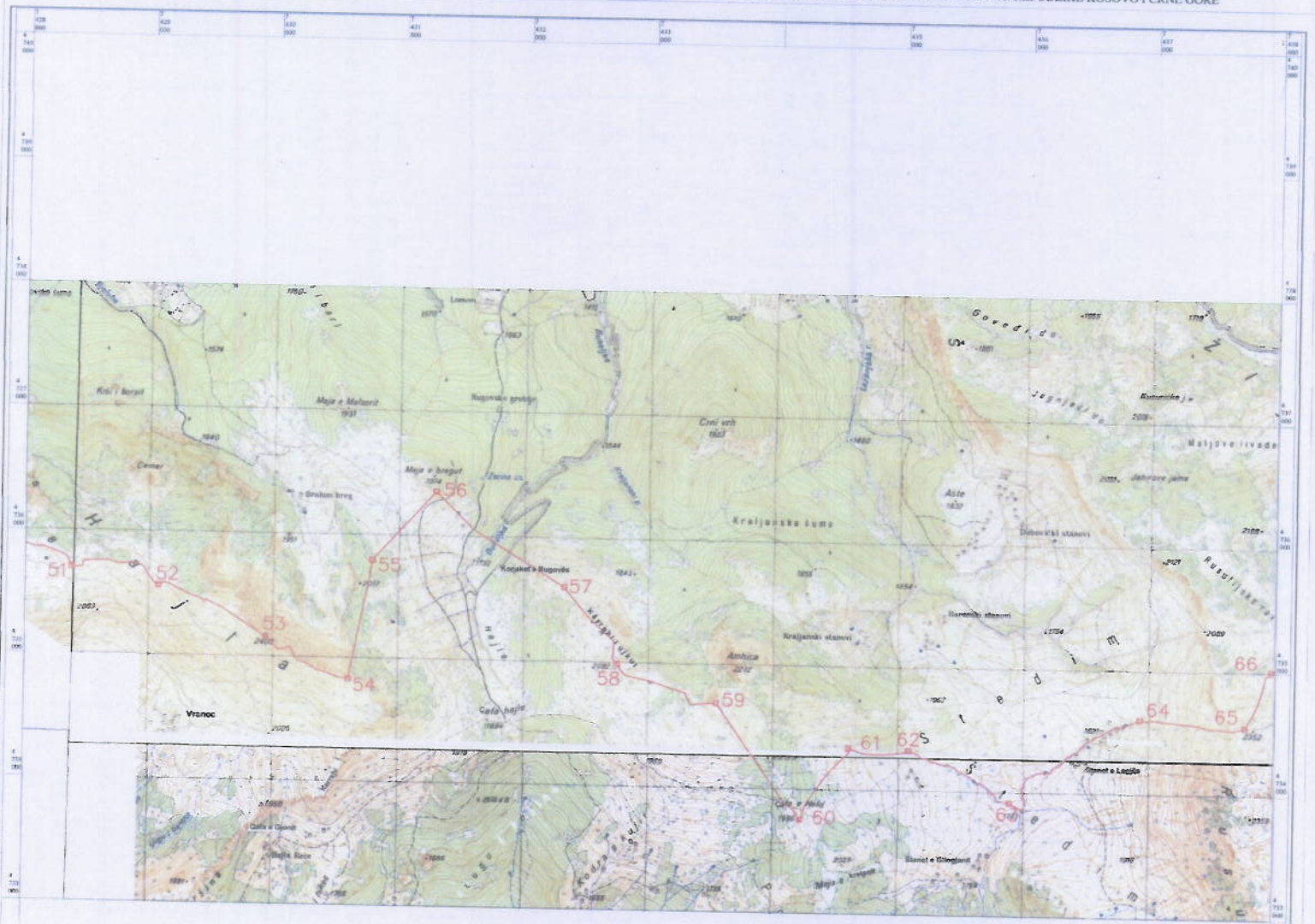
From the point No. 39, the border line wriggles to the north in the length of 1830 m, to the point No. 40. Further on it turns on to the east through ( Bregu i ariut/ Mećkin krš) in the length of 1600 m, to the point No. 41, which is also the trigonometric point with the altitude of 1802 m. The border line continues to the east through ( Qafa Murgash/ Ćafa Murgash ) in the length of 950 m, to the point No. 42, which is also the trigonometric point with the altitude of 1856 m. Further on it continues to the northeast in the length of 840 m, to the point No. 43, which is also the trigonometric point with the altitude of 1872 m. It continues further on in the same direction through ( Kryqëzimi/ Krstac) in the length of 520 m, to the point No. 44. The border line turns on to the east in the length of 960 m, to the point No. 45, which is also the altitude of 1941 m, and it is positioned in the place called (Bregi i Mujit). It continues further on in the same direction through (Hala e Shkrelit/ Škreljska Hajla) in the length of 850 m, to the point No. 46, which is also the altitude of 1211 m. It wriggles further on in the same direction in the length of 940 m, to the point No. 47. It continues further on to the east through (Maja Dramadol) in the length of 560 m, to the point No. 48. The border line turns on to the southeast in the length of

680 m, to the point No. 49, which is also the altitude of 2051 m. The border line turns on to the south in the length of 340 m, to the point No. 50. The border line turns on to the southeast through ( Hajllës/ Hajla) in the length of 1620 m, to the point No. 51. From the point No. 51, the border line turns on to the east in the length of 820 m, to the point No. 52. It continues further on to the southeast through (Hajllës/Hajla ) in the length of 1000 m, to the point No. 53, which is also the trigonometric point with the altitude of 2403 m. The border line continues to the same direction in the length of 800 m, to the point No. 54. The border line turns on to the north in the length of 990 m, to the point No. 55. The border line turns on to the northeast in the length of 750 m, to the point No. 56. The border line continues to the southeast through (Konaku i Rugovës/ Rugovski konaci) in the length of 1300 m, to the point No. 57. It continues to the same direction through ( Bregu i Ujku/ Ujkin krš) in the length of 800 m, to the point No. 58. It continues further on to the same direction in the length of 920 m, to the point No. 59. The border line turns on to the south in the length of 1160 m, to the point No. 60.

From the point No. 60, the border line turns on to the north in the length of 710 m, to the point No. 61. From the point No. 61, the border line goes to the east in the length of 495 m to the point No. 62. From the point No. 62 the border line turns on to the southeast in the length of 1060 m, to the point No. 63. From this point, the border line turns on to the northeast in the length of 1370 m, to the point No. 64, which is positioned in the place called ( Stanet e Logjës/ Ljočki stanovi). From the point No. 64, the border line turns to the east in the length of 850 m, to the point No. 65. Continues in north direction in the length of 500 m, to the point No. 66. From this point border line turns to the east in the length of 1160 m, to the point No. 67, which has elevation 2326 m. From the point No. 67, the border line turns on to the north in the length of 920 m, to the point No. 68. The border line wriggles to the northeast in the length of 1180 m, to the point No. 69. Further on it the continues in the same direction in the length of 730 m, to the point No. 70. The border line crosses the road (Çakor/Čakor – Pejë/Peć), and it continues to the north in the length of 1080 m, to the point No. 71, which is also the trigonometric point with the altitude of 1873 m. It continues further on in the same direction in the length of 1700 m, to the point No. 72. From this point, the border line turns on to the northwest in the length of 1200 m, to the point No. 73. The border line turns on to the north in the length of 380 m, to the point No. 74, which is also the altitude of 1864 m. From this point on, the border line turns on to the northeast in the length of 1180 m, to the point No. 75. The border line continues in the same direction in the length of 960 m, to the point No. 76. From this point on, the border line turns on to the north, it crosses the point 1766 m, it continues in the same direction in the total length of 1230 m, to the point No. 77. From this point, the border line turns on to the south in the length of 650 m, to the point No. 78, which is also the trigonometric point with the altitude of 1856 m. The border line turns on to the east in the length of 720 m, to the point No. 79, which is also the altitude of 1913 m. From this point, the border line continues to the north, it crosses the altitude of 1440 m, and it continues to the same direction to the stream in the total length of 1270 m, to the point No. 80. From this point, the border line turns on to the east in the length of 1500 m, to the point No. 81. From this point, the border line turns on to the south in the length of 1270 m, to

the point No. 82, which is also the trigonometric point with the altitude of 2098 m, in the place called (Bandera). From this point, the border line turns on to the northeast in the length of 1020 m, to the point No. 83, which is also the trigonometric point with the altitude of 2065 m. The border line turns on to the east in the length of 560 m, to the point No. 84, which is also the altitude of 1997 m. The border line continues in the same direction in the length of 760 m, to the point No. 85, which is also the altitude of 2006 m, positioned in the place called (Beleg/Belleg). From this point, the border line continues in the same direction in the length of 1120 m, to the point No. 86, which is the trisection point between the Republic of Kosovo, Montenegro and the Republic of Serbia.

HARTA TOPOGRAFIKE NË PËRPIESË 1:25000 ME VIJËN E KUFIRIT DHE ME KOORDINATA TË PIKAVE KRYESORE THYESE NDËRMJET SHITETEVE: REPUBLIKËS SË KOSOVËS DHE MALIT TË ZI  
 TOPOGRAFSKA KARTA U RAZMERI 1:25000 SA UCRTANOM GRANI ÇNOM LINJOM I KOORDINATAMA GLAVNIH PRELOMNIH TA ÇAKA IZMEDU DRŽAVA: REPUBLIKE KOSOVO I CRNE GORE



Nr / Br	Y	X
51	7428369.78	4735705.24
52	7429070.72	4735568.26
53	7429933.73	4735158.83
54	7430593.46	4734829.92
55	7430777.77	4735799.90
56	7431282.71	4736356.41
57	7432313.96	4735806.93
58	7432745.59	4734989.84
59	7433539.77	4734890.26
60	7434218.33	4733757.91
61	7434598.72	4734342.16
62	7435078.01	4734329.70
63	7435887.50	4733920.74
64	7436920.70	4734605.20
65	7437759.72	4734554.42
66	7437964.43	4735008.52

Harta e kufirit shtetëror Karta drëzavne granice	Harta numër: Broj karte: 4
PËrpijesa: Razmjera: 1:25 000	Sistemi koordinativ: Gauss-Kruger Koordinati sistem: Gauss-Kruger
 Republika e Kosovës Qeveria e Republikës së Kosovës	 Crna Gora Vlada Crne Gore Ministarstvo unutrašnjih poslova
Komisioni shtetëror për shënjimin dhe mirëmbajtjen e kufirit shtetëror	Komisiona za državnu granicu
Kryetar i komisionit Prof. Dr. 	Prodjednik komisione Milan Puzovic 
	
	Prizina, Jun 2015

HARTA TOPOGRAFIKE NË PËRPIESË 1:25000 ME VJËN E KUFIRIT DHE ME KOORDINATA TË PIKAVE KYRESORE THYESE NDËRMJET SHTETEVE: REPUBLIKËS SË KOSOVËS DHE MALIT TË ZI  
 TOPOGRAFSKA KARTA U RAZMERI 1:25000 SA UCRTANOM GRANI ÇNOM LINDOM I KOORDINATAMA GLAVNIH PRELOMNIH TA ÇAKA IZMEĐU DRŽAVA: REPUBLIKE KOSOVO I CRNE GORE



Nr / Br	Y	X
67	7439086.73	4735255.12
68	7439326.66	4736145.68
69	7439922.12	4739988.83
70	7440404.18	4737482.27
71	7440179.74	4738544.50
72	7440139.07	4740245.53
73	7439293.32	4740983.35
74	7439478.26	4741312.90
75	7440442.51	4741708.70
76	7441234.73	4742193.24
77	7441665.09	4743177.68
78	7442011.00	4742673.04
79	7442702.97	4742586.07
80	7443050.24	4743779.26
81	7444485.02	4743750.03
82	7444846.54	4742653.81
83	7445464.31	4743444.45
84	7445991.41	4743634.53
85	7446571.62	4743653.64
86	7447537.93	4743426.20

Karta državne granice	Broj karte: 5
Përpjesa: 1:25 000	Sistemi koordinativ: Gauss-Kruger
Razmjera:	Koordinati sistem: Gauss-Kruger
Republika e Kosovës Qeveria e Republikës së Kosovës	Crna Gora Vlada Crne Gore Ministarstvo unutrašnjih poslova
Komisioni shtetëror për shërbimet dhe mirëmbajtjen e kufirit shtetëror	Komisioni za državnu granicu
Kryetar i komisionit Prof.Dr. Murat Meh...	Predsjednik komisije Milan Paunović
Pristinë,	Pristina,
Qershor 2015	Jun 2015



HARTA TOPOGRAFIKE NË PËRPIESË 1:25000 ME VJËN E KUFIRIT DHE ME KOORDINATA TË PIKAVE KRYESORE THYESE NDËRMJET SHTETËVE: REPUBLIKËS SË KOSOVËS DHE MALIT TË ZI  
 TOPOGRAFSKA KARTA U RAZMERI 1:25000 SA UCRTANOM GRANI ÇNOM LINJOM I KOORDINATAMA GLAVNIH PRELOMNIH TA ČAKA IZMEĐU DRŽAVA: REPUBLIKE KOSOVO I CRNE GORE



Nr./Br.	Y	X
31	7421267.34	4730134.17
33	7419932.43	4730358.16
34	7420602.80	4730816.68
35	7421160.58	4731152.10
36	7419820.39	4732351.12
37	7419732.39	4733412.95
38	7420171.31	4733850.15
39	7420307.63	4734438.17
40	7420611.12	4736104.88
41	7421712.94	4736771.54
42	7422479.75	4737014.16
43	7423093.40	4737478.52
44	7423585.81	4737617.79
45	7424385.53	4737156.37
46	7425229.36	4737153.82
47	7426090.83	4737273.24
48	7426644.08	4737325.98
49	7427179.40	4736909.70
50	7427088.58	4736685.89
51	7428369.78	4735705.24

Harta e kufirit shtetëror	Harta numër:
Karta državne granice	Broj karte: 3
Përpjesa: 1:25 000	Sistemi koordinativ: Gauss-Kruger
Razmjera:	Koordinati sistem: Gauss-Kruger
 Republika e Kosovës Qeveria e Republikës së Kosovës	 Crna Gora Vlada Crne Gore Ministarstvo unutrašnjih poslova
Komisioni shtetëror për shënjimin dhe mëzmbajtjen e kufirit shtetëror	Komisiona za državnu granicu
Kryetar i komisionit Prof. Dr. Murat Mehilli Prishtinë, Qershor 2015	Prejdhjetnik komisionit Milan Pantić Prishtinë, Jun 2015

HARTA TOPOGRAFIKE NË PËRPIESË 1:25000 ME VIJËN E KUFIRIT DHE ME KOORDINATA TË PIKAVE KRYESORE THYESE NDËRMJET SHTETEVE: REPUBLIKËS SË KOSOVËS DHE MALIT TË ZI  
 TOPOGRAFSKA KARTA U RAZMERI 1:25000 SA UCRTANOM GRANI ÇNOM LINJOM I KOORDINATAMA GLAVNIH PRELOMNIH TA ÇAKA IZMEĐU DRŽAVA: REPUBLIKE KOSOVO I CRNE GORE



Nr / Br	Y	X
14	7424417.94	4720038.38
15	7425092.24	4720596.42
16	7425648.57	4721381.43
17	7426236.10	4722236.90
18	7427353.02	4722999.87
19	7427626.49	4723639.83
20	7428215.15	4725064.13
21	7428918.69	4725232.33
22	7425726.65	4725338.43
23	7425407.82	4726321.78
24	7425316.92	4726600.42
25	7424078.46	4726641.56
26	7423704.40	4727143.40
27	7422949.81	4727152.68
28	7421560.19	4726491.91
29	7421228.02	4726578.41
30	7421103.81	4729607.57
32	7419827.19	4729984.81

Harta e kufirit shtetëror  
 Karta državne granice  
 Harta numër: 2  
 Broj karte: 2

Përpjesa: 1:25 000  
 Ranzjera: 1:25 000  
 Sistemi koordinativ: Gauss-Kruger  
 Koordinativni sistem: Gauss-Kruger

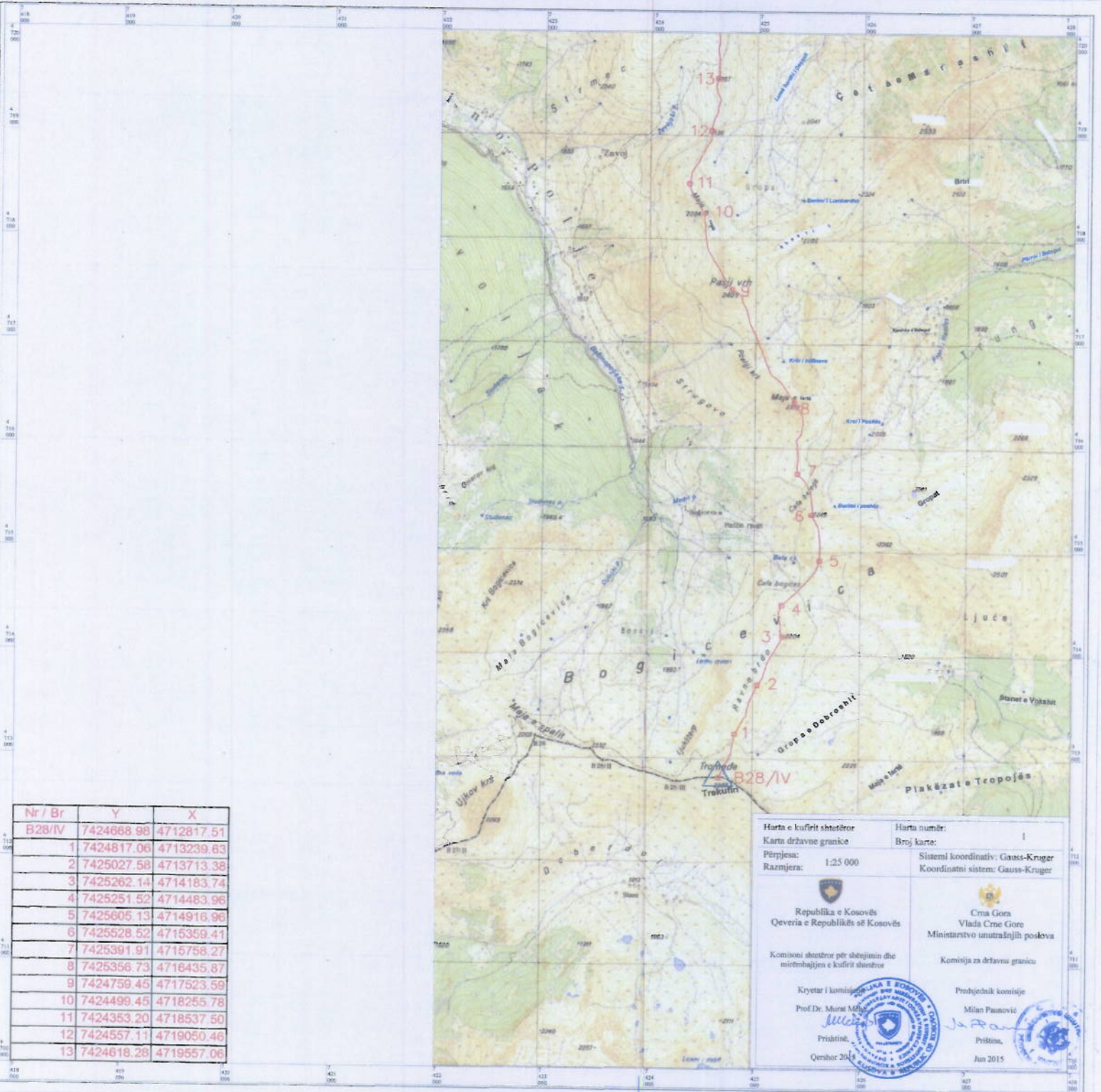
Republika e Kosovës  
 Qeveria e Republikës së Kosovës  
 Komisioni shtetëror për shënimin dhe mirëmbajtjen e kufirit shtetëror

Crna Gora  
 Vlada Crne Gore  
 Ministarstvo unutrašnjih poslova  
 Komisija za državnu granicu

Kryetar i komisionit: Prof. Dr. Murat Selimi  
 Prishtinë, Qershor 2015

Predjedetnik komitije: Milan Paunović  
 Prishtinë, Jun 2015

HARTA TOPOGRAFIKE NË PËRPIJESË 1:25000 ME VIJËN E KUFIRIT DHE ME KOORDINATA TË PIKAVE KRYESORE THYESE NËDËRMJET SHTETEVE: REPUBLIKËS SË KOSOVËS DHE MALIT TË ZI  
 TOPOGRAFSKA KARTA U RAZMERI 1:25000 SA UCRTANOM GRANI ÇNOM LINIJOM I KOORDINATAMA GLAVNIH PRELOMNIH TA ČAKA IZMEĐU DRŽAVA: REPUBLIKE KOSOVO I CRNE GORE



Nr / Br	Y	X
B28/IV	7424868.98	4712817.51
1	7424817.06	4713239.63
2	7425027.58	4713713.38
3	7425262.14	4714183.74
4	7425251.52	4714483.96
5	7425605.13	4714916.96
6	7425528.52	4715359.41
7	7425391.91	4715758.27
8	7425356.73	4716435.87
9	7424759.45	4717523.59
10	7424499.45	4718255.78
11	7424353.20	4718537.50
12	7424557.11	4719050.48
13	7424618.28	4719557.06

Harta e kufirit shtetëror Karta državne granice	Harta numër: Broj karte: I
Përpjesa: Razmjera: 1:25 000	Sistemi koordinativ: Gauss-Kruger Koordinati sistem: Gauss-Kruger
 Republika e Kosovës Qeveria e Republikës së Kosovës	 Crna Gora Vlada Crne Gore Ministarstvo unutrašnjih poslova
Komisioni shtetëror për detajimin dhe mirëmbajtjen e kufirit shtetëror  Kryetar i komisionit Prof. Dr. Murat Mehmeti Prishtinë, Qershor 2015	Komisionja za državnu granicu  Prethjednik komisije Milan Panovčić Priština, Jun 2015